


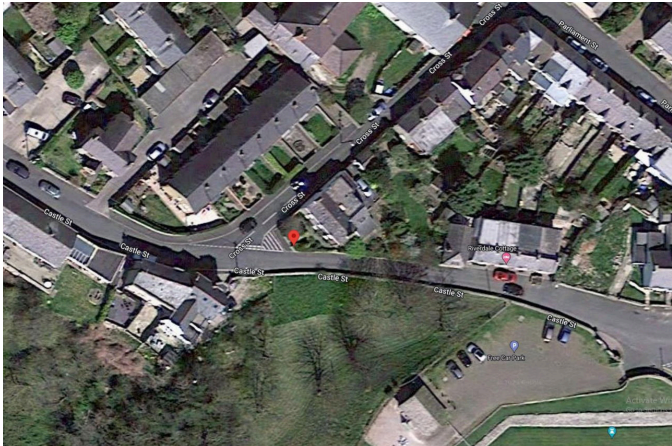


Ty Mawr Castle Street, Rhuddlan

Offers In Region Of £375,000

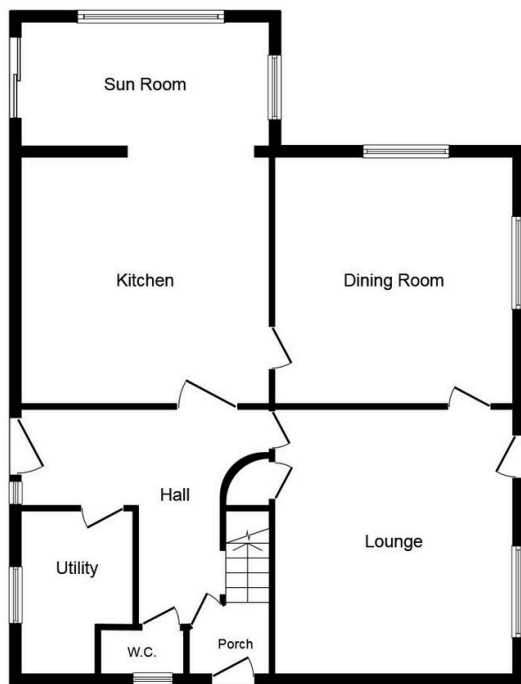
 4  2  3



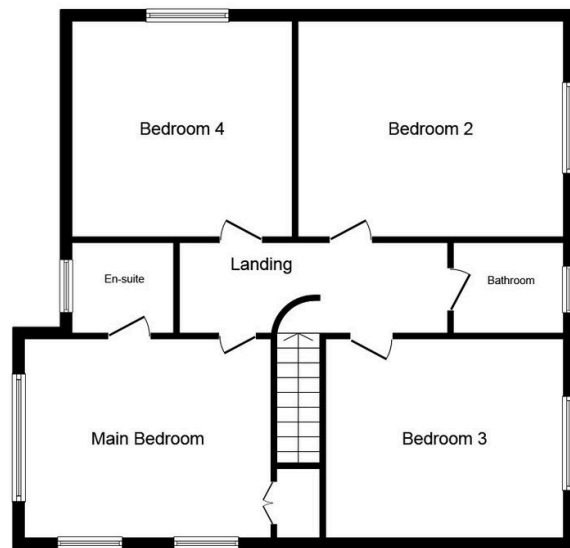
An opportunity has arisen to purchase this unique four bedroom property of which the interior was designed by the well known architect Gerald Beech. The property resides in the popular historic village of Rhuddlan boasting a medieval castle, quaint row of shops and golf course.

The property is within walking distance of all amenities and has lovely views towards the castle from the two upstairs bedrooms. With off street parking and beautiful landscaped gardens that were designed by David Anderson BA (Hons) and has a 'Secret Garden' feel, having a plethora of mature plants, fruit trees and shrubs, with a hidden oasis round every corner. Directions: Proceed away from the Rhyl office over the Vale Road bridge onto Vale Road, continue onto Rhuddlan Road in the direction of Rhuddlan. On entering the village of Rhuddlan, go straight ahead at the mini roundabout, then left into Castle Street where the property can be seen on the left hand side on the corner of Cross Street.

- Unique four bedroom home
- Village location
- Detached
- Picturesque landscaped gardens
- Views of the Castle and hilltops
- En-suite & Utility
- Three reception rooms
- Off street parking
- EPC - TBC / Council tax -F
- Freehold / Date - 27/07/2023



Ground Floor



First Floor

This floor plan is for illustration purposes only and may not be representative of the property. The position and size of doors, windows and other features are approximate. Unauthorized reproduction prohibited. © PropertyBOX